

6

5

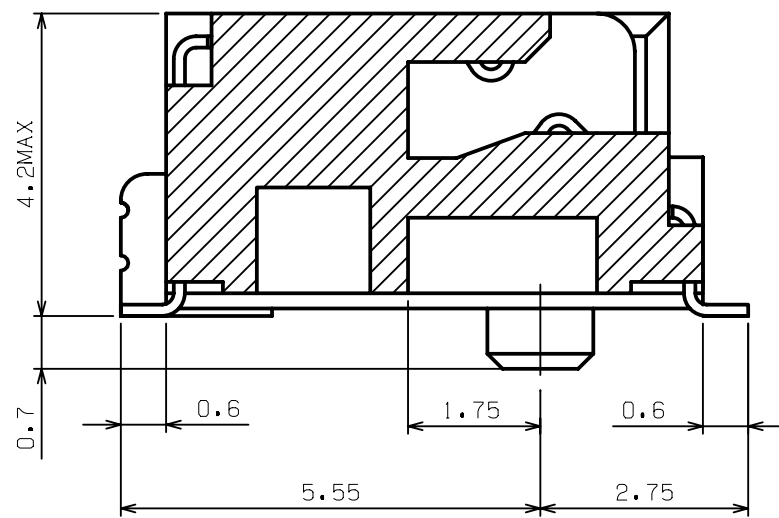
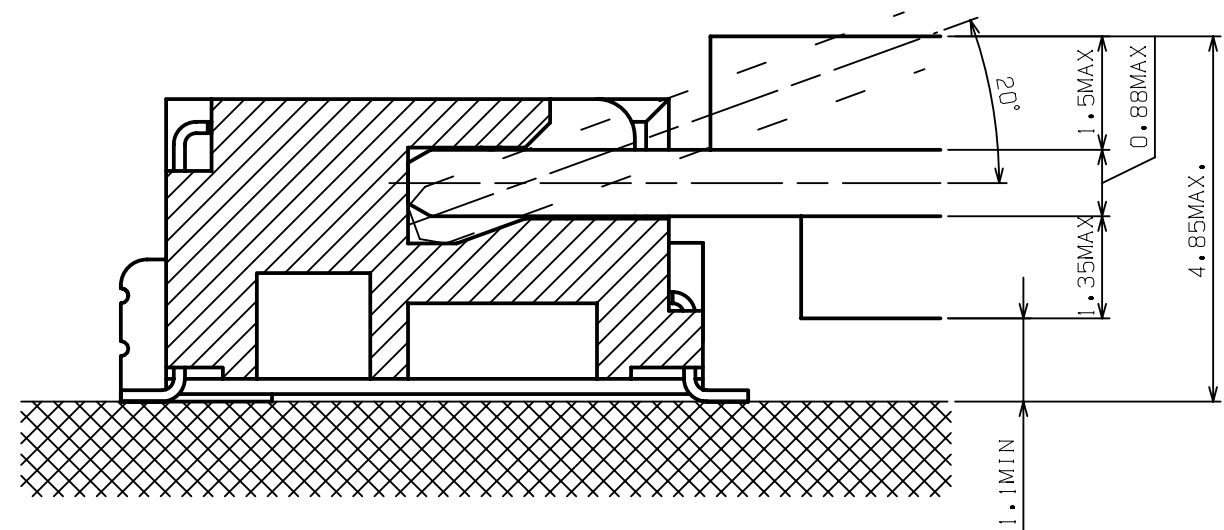
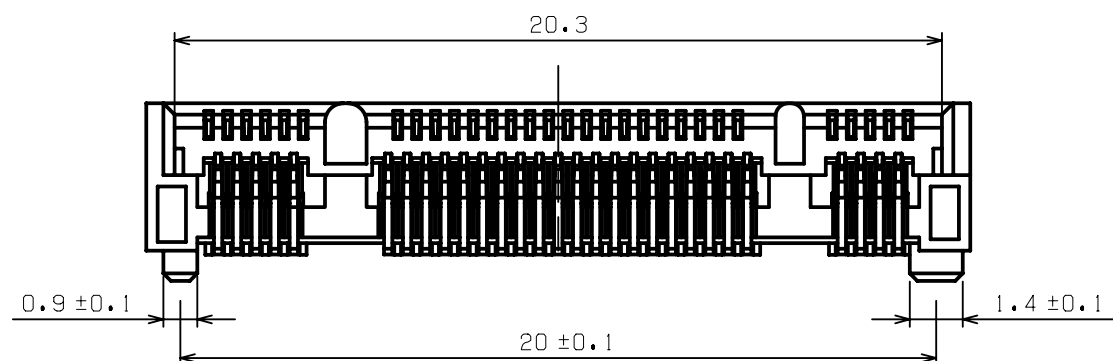
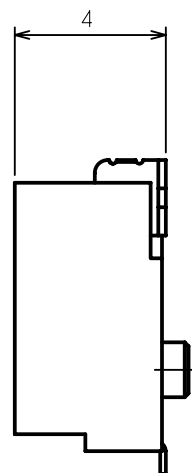
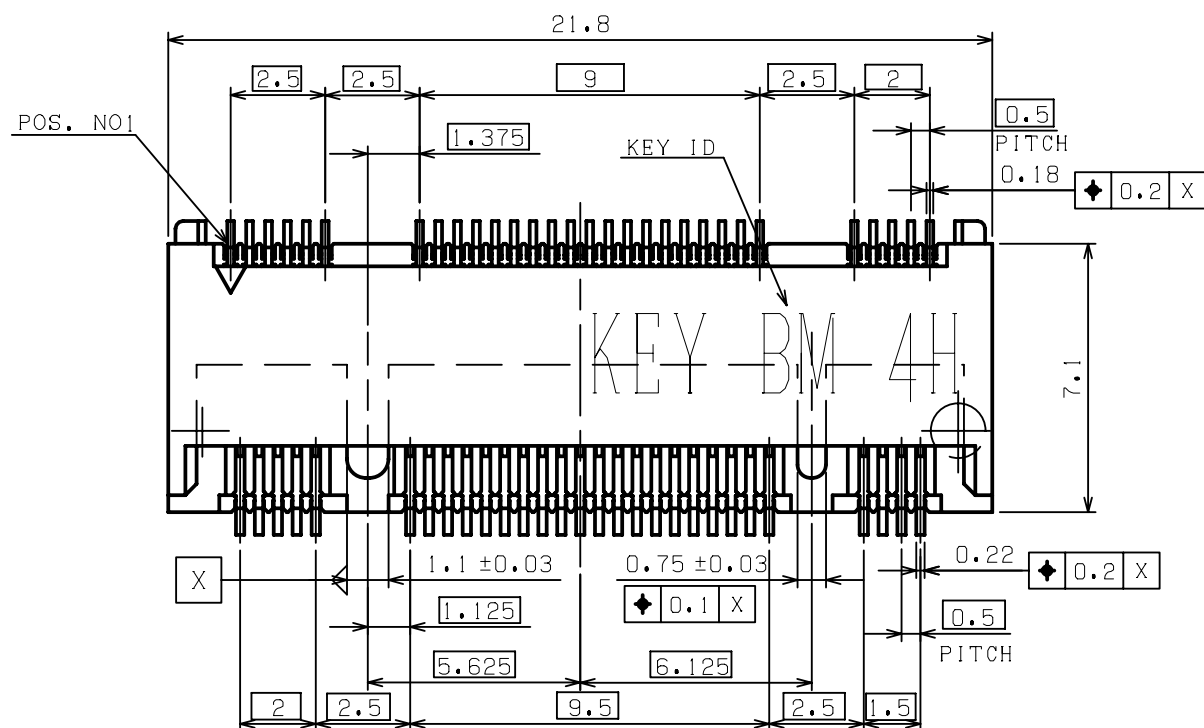
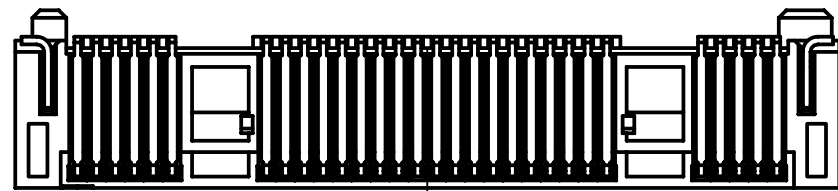
4

3

2

1

REV.	DESCRIPTION	DATE	DWG.	CHKD
0	PROPOSED	13/10/24	B.K	T.H



NOTES:

- MATERIAL:
HOUSING: HIGH TEMPERATURE THERMO PLASTIC UL94V-0
TERMINAL: COPPER ALLOY
SOLDER PEG: COPPER ALLOY
- FINISH:
TERMINAL:
CONTACT AREA: SEE CHARTS
SOLDERING AREA: SEE CHARTS
UNDER PL.: NICKEL PL. 50 μ" THK MIN.
- THIS PRODUCT DOESN'T CONTAIN ENVIRONMENTAL HAZARDOUS PER DIRECTIVE 2002/95/EC FOR RoHS COMPLIANT.

KEY BM	Au:30μ"	CA1020-059B03
	Au:15μ"	CA1020-059B02
KEY ID	GOLD FLASH	CA1020-059B01
	FINISH	PART NO.

FINISH		NAME		PART NO.	
MATERIAL	NET WEIGHT	COLOR	GENERAL TOLERANCE	UNIT:mm	
*****	***g	BLACK	±0.2 ±3°	UNIT:mm	
FIN.&TREAT	GROSS WEIGHT	SCALE	SIZE	UNIT:mm	
*****	***g	5:1	A3	UNIT:mm	
CUSTOMER	PART NO.		REV.	A	
*****	CA1020-059B**		0	A	
CUSTOMER PART NO.	PROPOSAL NO.		REV.	*	
*****	****-***-**-**		*	*	
美星鴻科技股份有限公司 MSH TECHNOLOGY INC.			NAME (SHEET 1 OF 4)		
M.2 CONNECTOR KEY ID "BM"			0.5mm PITCH 4H ASSY		
APP. 13/10/24	CHKD 13/10/24	DWG. 13/10/24	T.HASHIMOTO T.HASHIMOTO B.KA		

(CUSTOMER DRAWING)

6

5

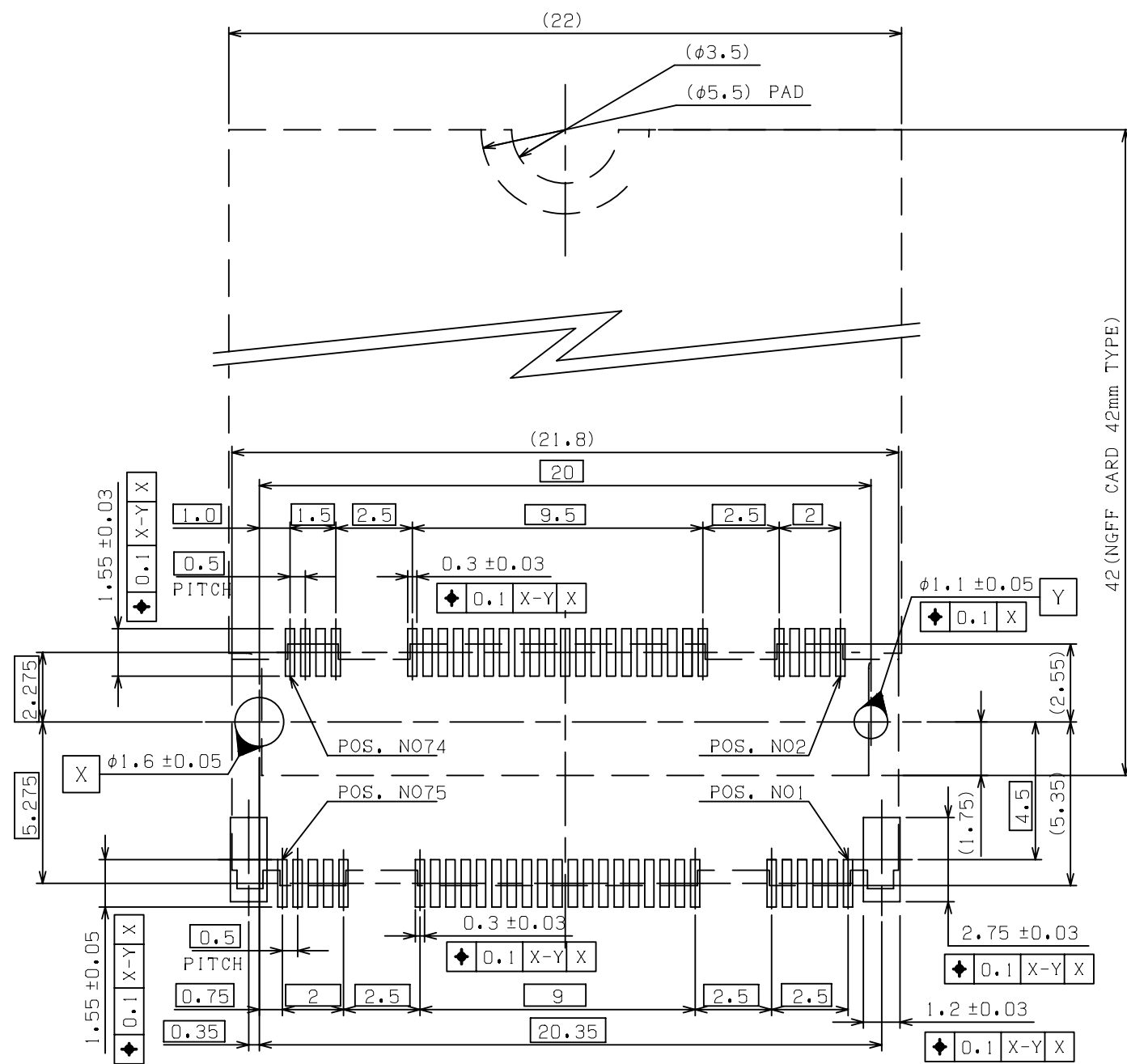
4

3

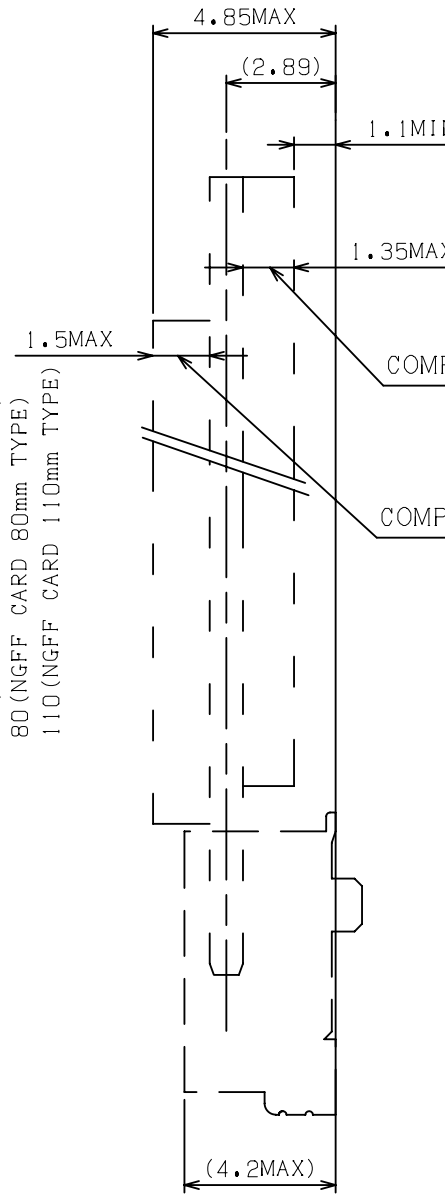
2

1

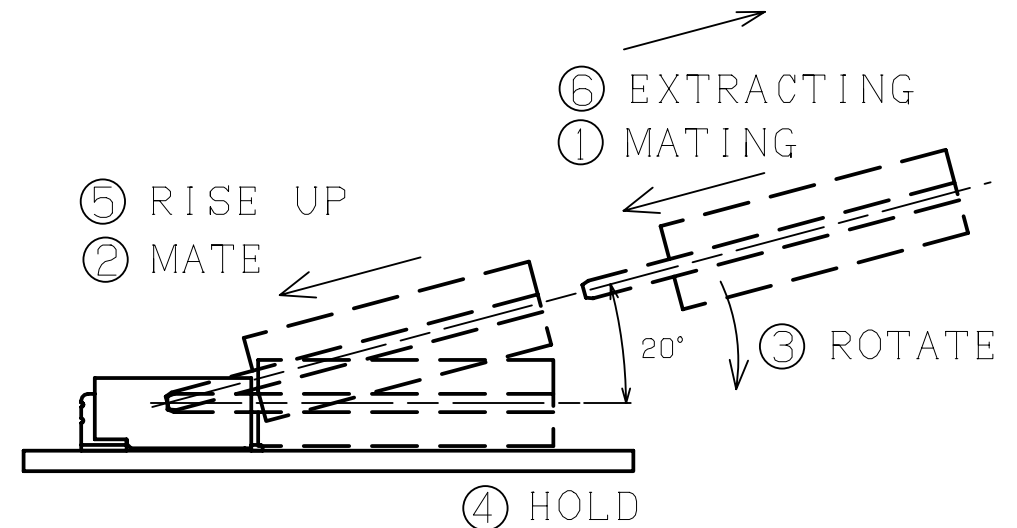
REV.	DESCRIPTION	DATE	DWG.	CHKD
	SEE SHEET 1 OF 4			



KEY ID "BM"
RECOMMENDED P.C. BOARD LAYOUT



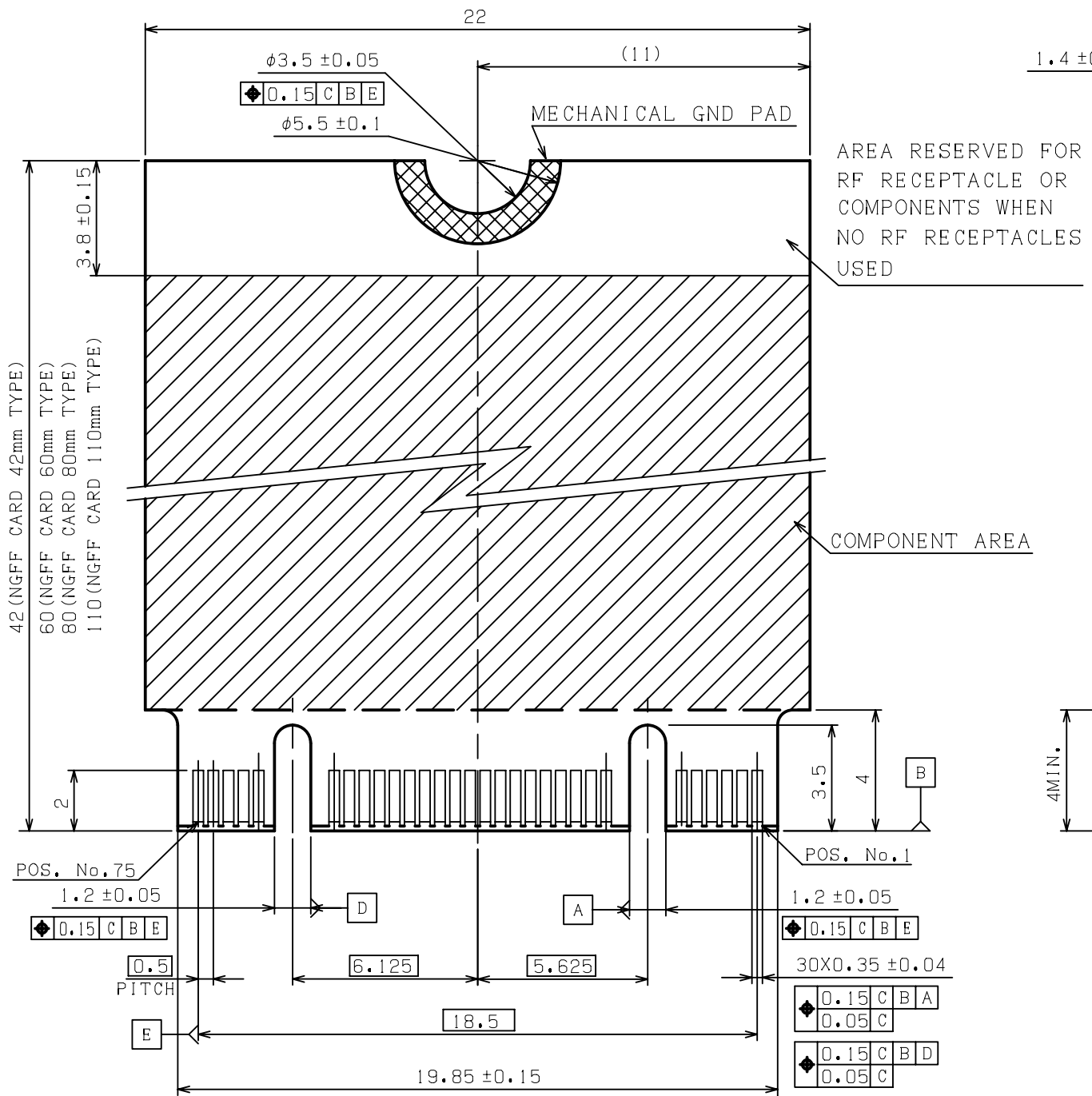
COMPONENT HEIGHT (BACK SIDE)
COMPONENT HEIGHT (FRONT SIDE)



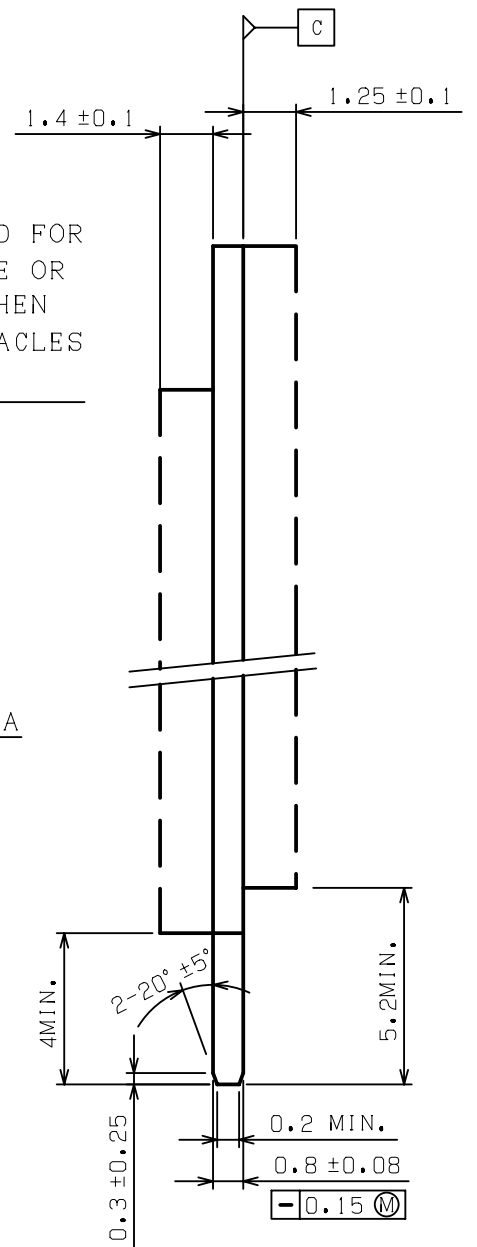
FINISH		NAME		PART NO.	
MATERIAL	NET WEIGHT	COLOR	GENERAL TOLERANCE	UNIT:mm	
*****	***g	BLACK	$\pm 0.2 \pm 3^\circ$	① ②	
FIN.&TREAT	GROSS WEIGHT	SCALE	SIZE	A3	
*****	***g	5:1	A3	③ ④	
CUSTOMER	PART NO.	CA1020-059B**		REV.	0
CUSTOMER PART NO.	PROPOSAL NO.	****-***-**-**		REV.	*
*****		NAME		(SHEET 2 OF 4)	
美星鴻科技股份有限公司 MSH TECHNOLOGY INC.		M.2 CONNECTOR KEY ID "BM"			
APP. '13/10/24	CHKD '13/10/24	DWG. '13/10/24	0.5mm PITCH 4H ASSY		
T.HASHIMOTO	B.KA				

(CUSTOMER DRAWING)

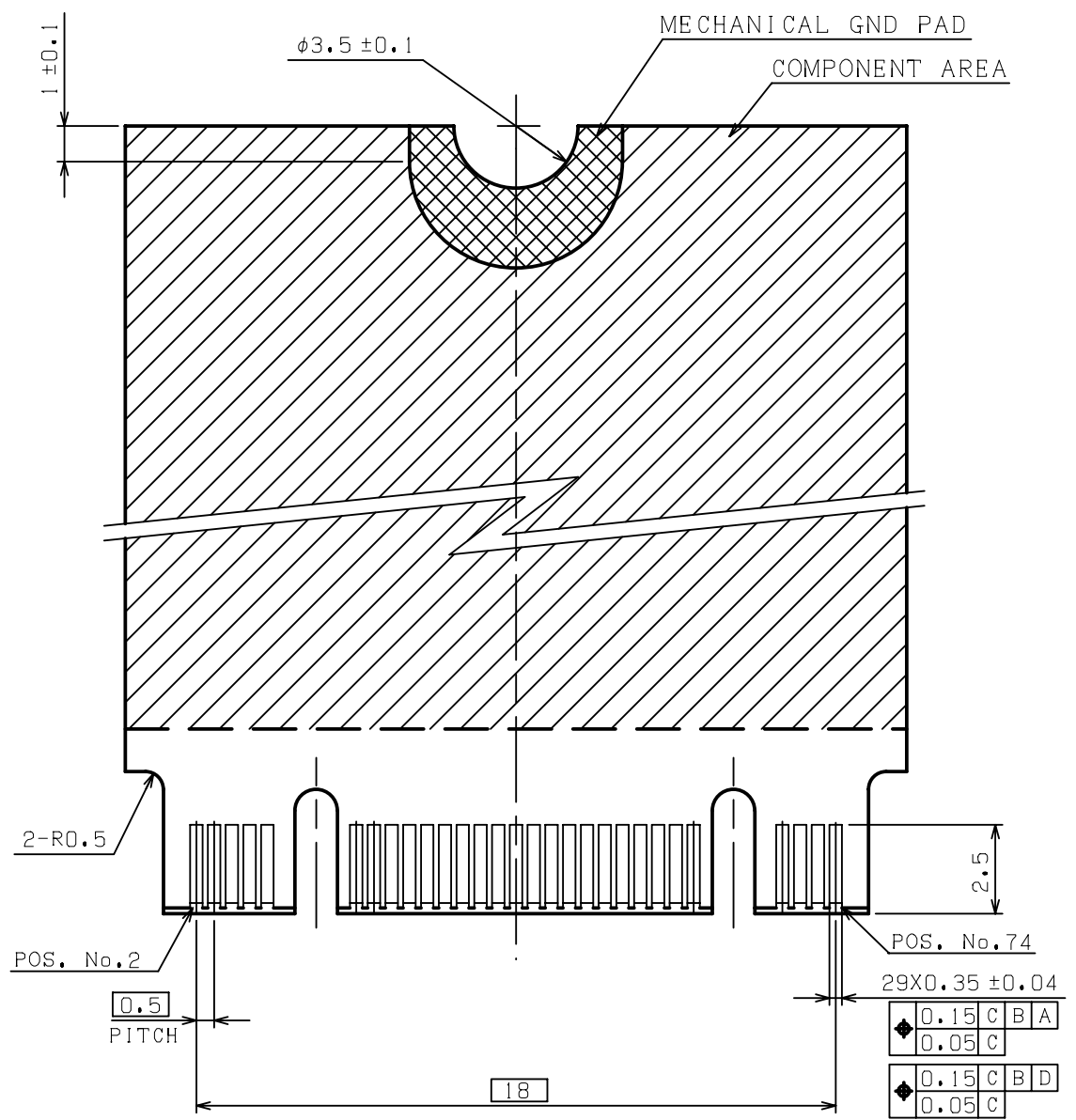
REV.	DESCRIPTION	DATE	DWG.	CHKD
SEE SHEET 1 OF 4				



FRONT SIDE



KEY ID "BM"
RECOMMENDED MODULE LAYOUT



BACK SIDE

GENERAL TOLERANCE ±0.15

FINISH		NAME		PART NO.	
MATERIAL	*****	NET WEIGHT	***g	COLOR	BLACK
FIN. & TREAT	*****	GROSS WEIGHT	***g	GENERAL TOLERANCE	±0.2 ±3°
CUSTOMER	*****	SCALE	5:1	SIZE	A3
CUSTOMER PART NO.	*****	PART NO.	CA1020-059B**		UNIT:mm
		PROPOSAL NO.	****-***-**-**		REV. 0
美星鴻科技股份有限公司 MSH TECHNOLOGY INC.				NAME M.2 CONNECTOR KEY ID "BM"	
APP. '13/10/24	CHKD '13/10/24	DWG. '13/10/24	(SHEET 3 OF 4)		
T.HASHIMOTO	T.HASHIMOTO	B.KA	0.5mm PITCH 4H ASSY		

(CUSTOMER DRAWING)

6

5

4

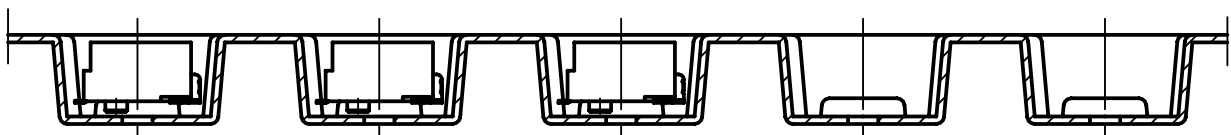
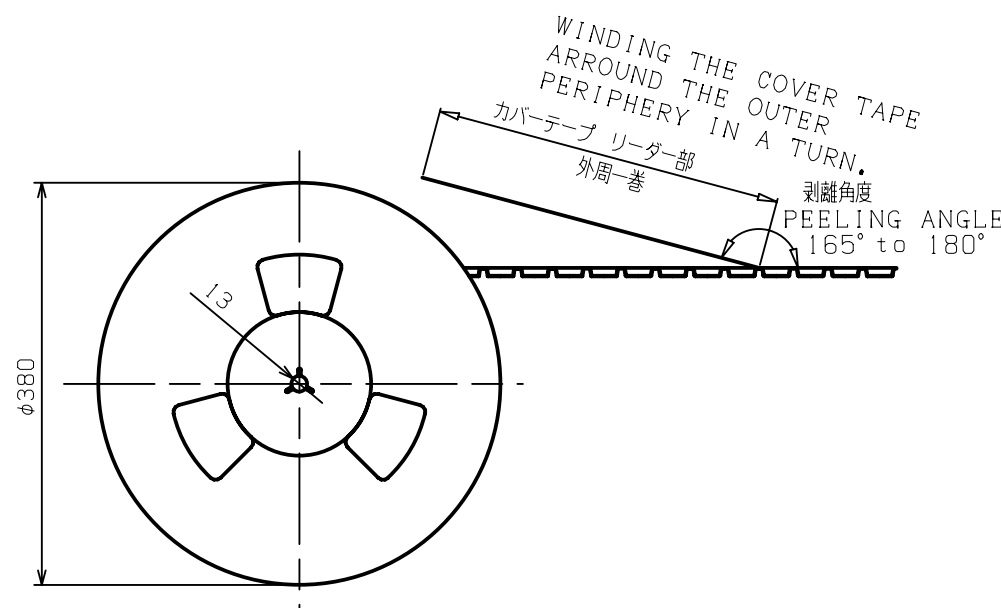
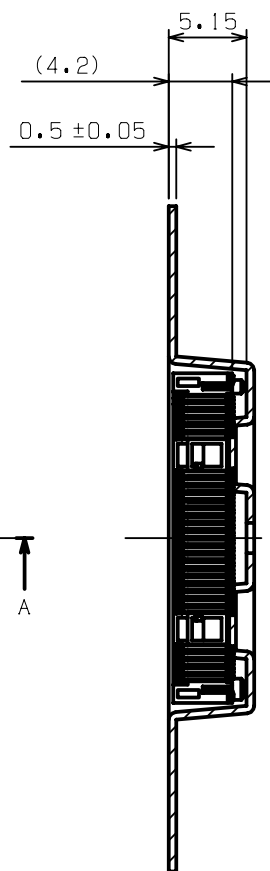
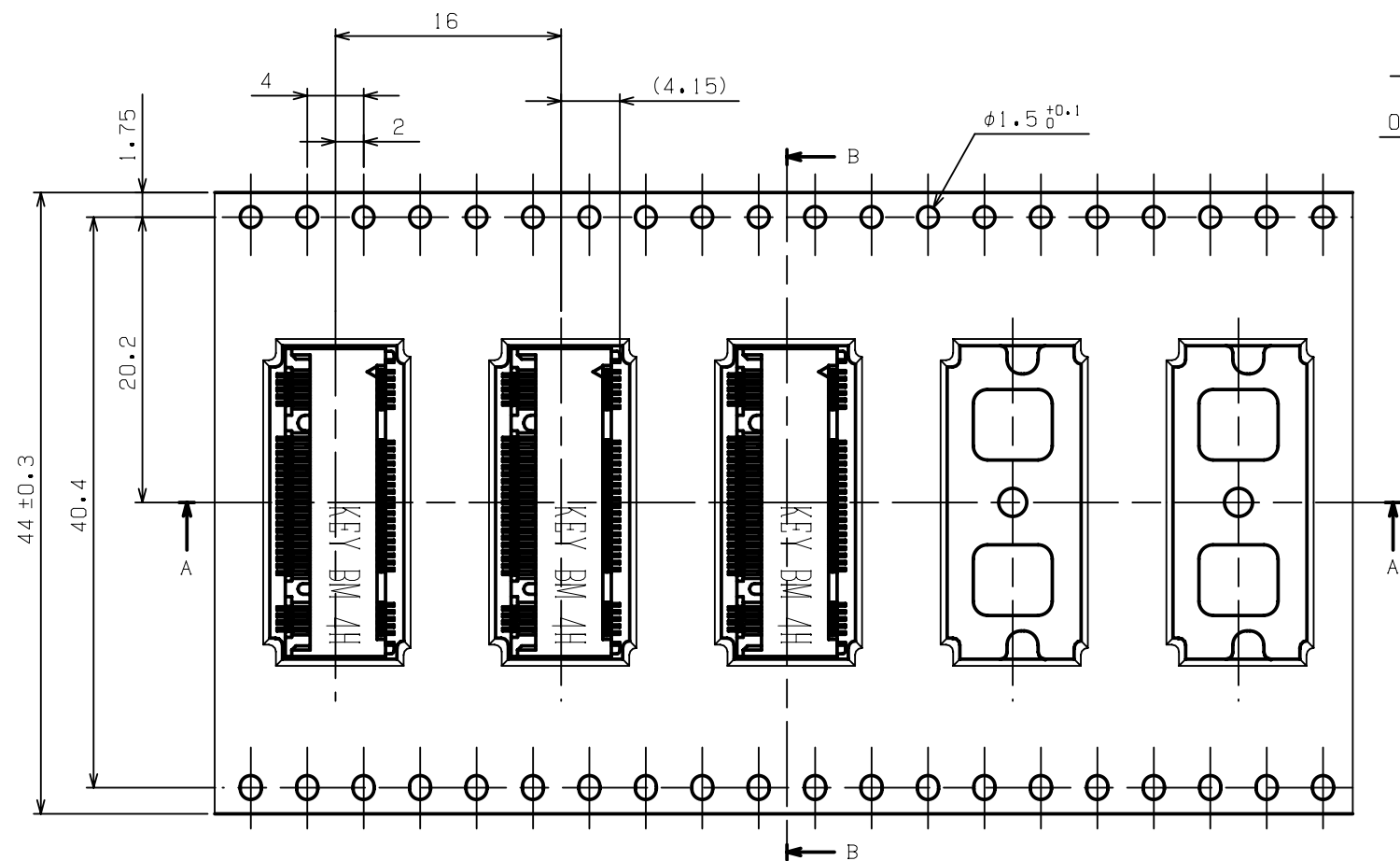
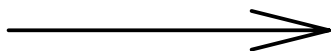
3

2

1

REV.	DESCRIPTION	DATE	DWG.	CHKD
	SEE SHEET 1 OF 4			

DIRECTION OFF TOP OF REEL



- NOTES:
1. THE DIRECTION OF EACH CONNECTOR ON A EMBOSS IS REFERED TO THIS DRAWING.
 2. GENERAL TOLERANCE : ±0.5 , ±3°
 3. PACKAGED IN EMBOSS TAPE AND PLASTIC REEL 1000 PCS PRE REEL.

FINISH		NAME		PART NO.	
MATERIAL	NET WEIGHT	COLOR	GENERAL TOLERANCE	UNIT:mm	
*****	***g	BLACK	±0.2 ±3°		
FIN.&TREAT	GROSS WEIGHT	SCALE	SIZE		
*****	***g	5:1	A3		
CUSTOMER			PART NO.	REV.	
*****			CA1020-059B**	0	
CUSTOMER PART NO.			PROPOSAL NO.	REV.	
*****			****-***-**-**	*	
美星鴻科技股份有限公司 MSH TECHNOLOGY INC.			NAME (SHEET 4 OF 4)		
			M.2 CONNECTOR KEY ID "BM"		
APP. 13/10/24	CHKD 13/10/24	DWG. 13/10/24	0.5mm PITCH 4H ASSY		
T.HASHIMOTO	T.HASHIMOTO	B.KA			

(CUSTOMER DRAWING)